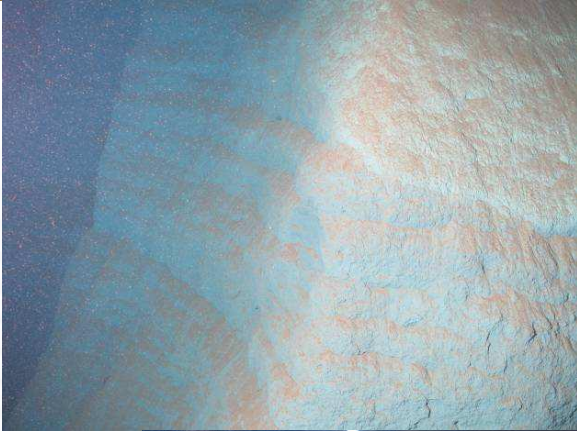


OCEANS DE PLASTIQUE



Pollutions marines



Pollutions marines



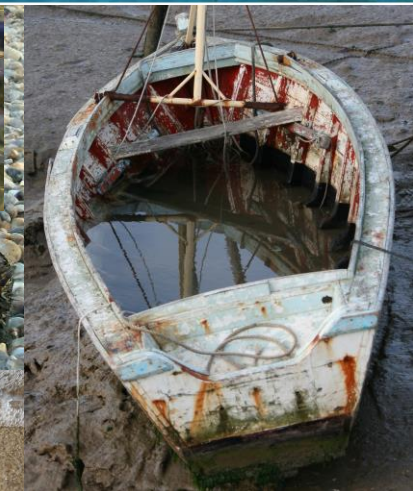
4 milliards de tonnes de déchets par an dans le monde

380 millions de tonnes de plastiques fabriquées chaque année dans le monde



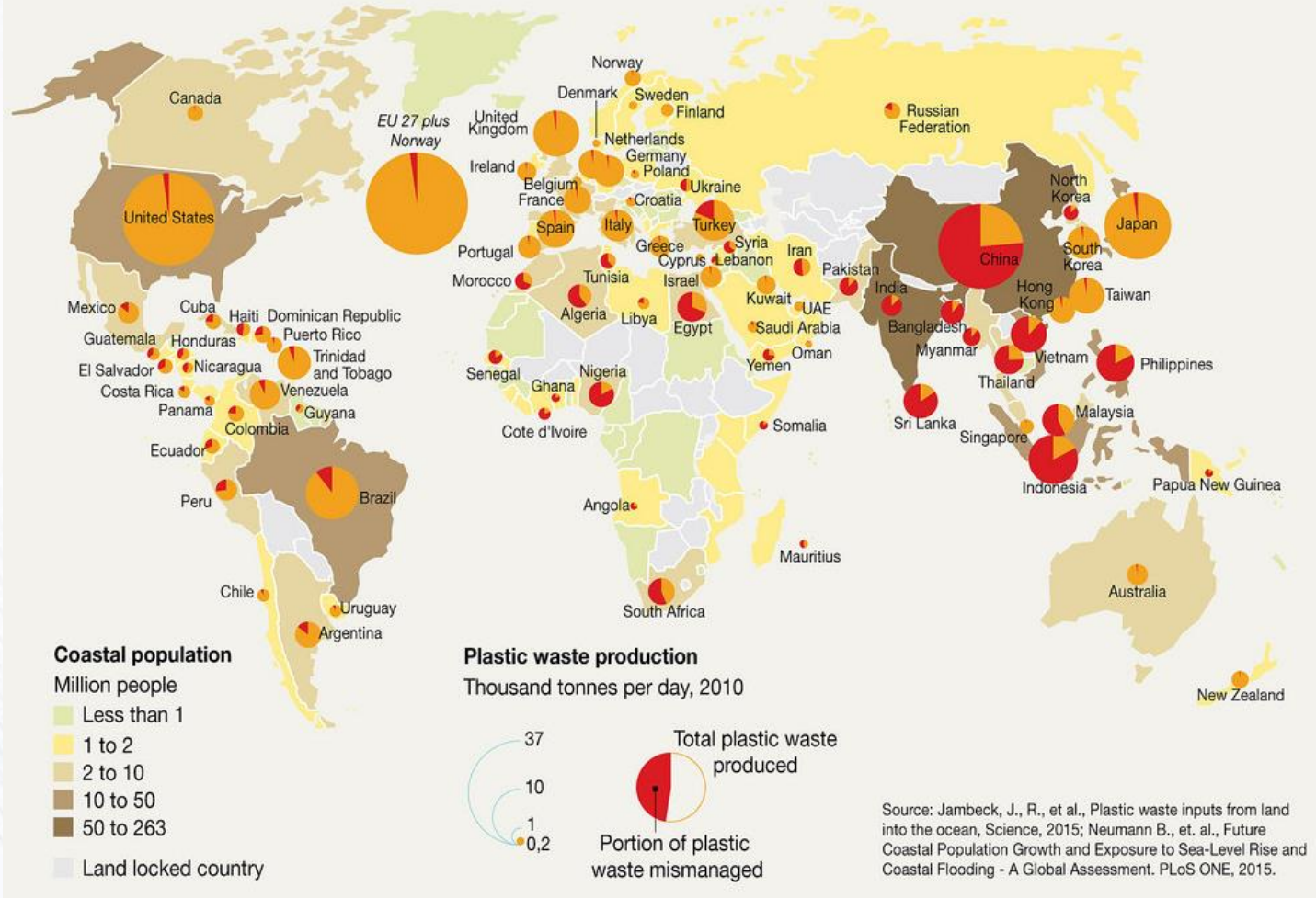
**8 millions de tonnes de plastiques d'apports continentaux
(500 tonnes/ J en Méditerranée)**

17 milliard de sacs plastiques distribués chaque année en France

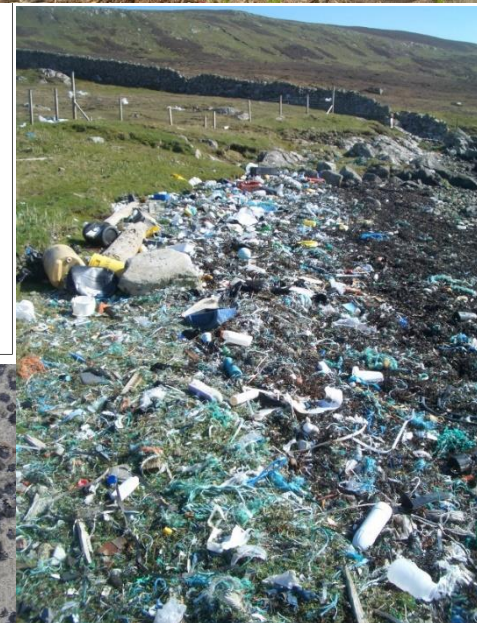
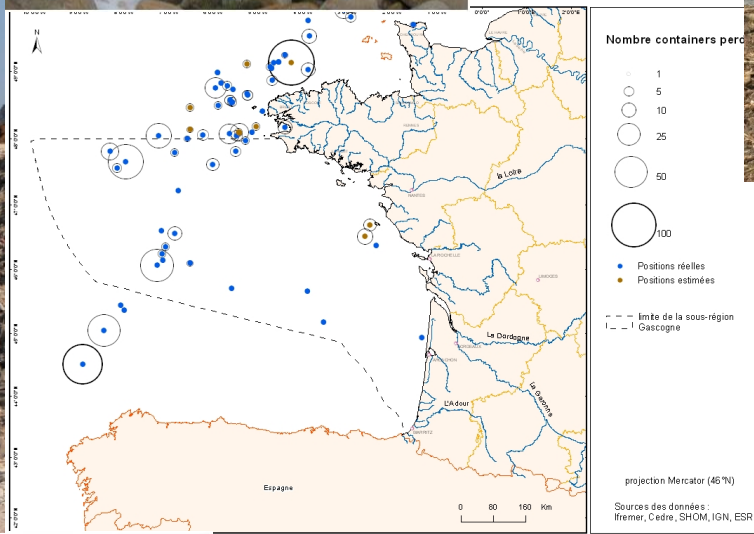


Diversité des déchets
(Emballages 45 %)

Plastic waste produced and mismanaged



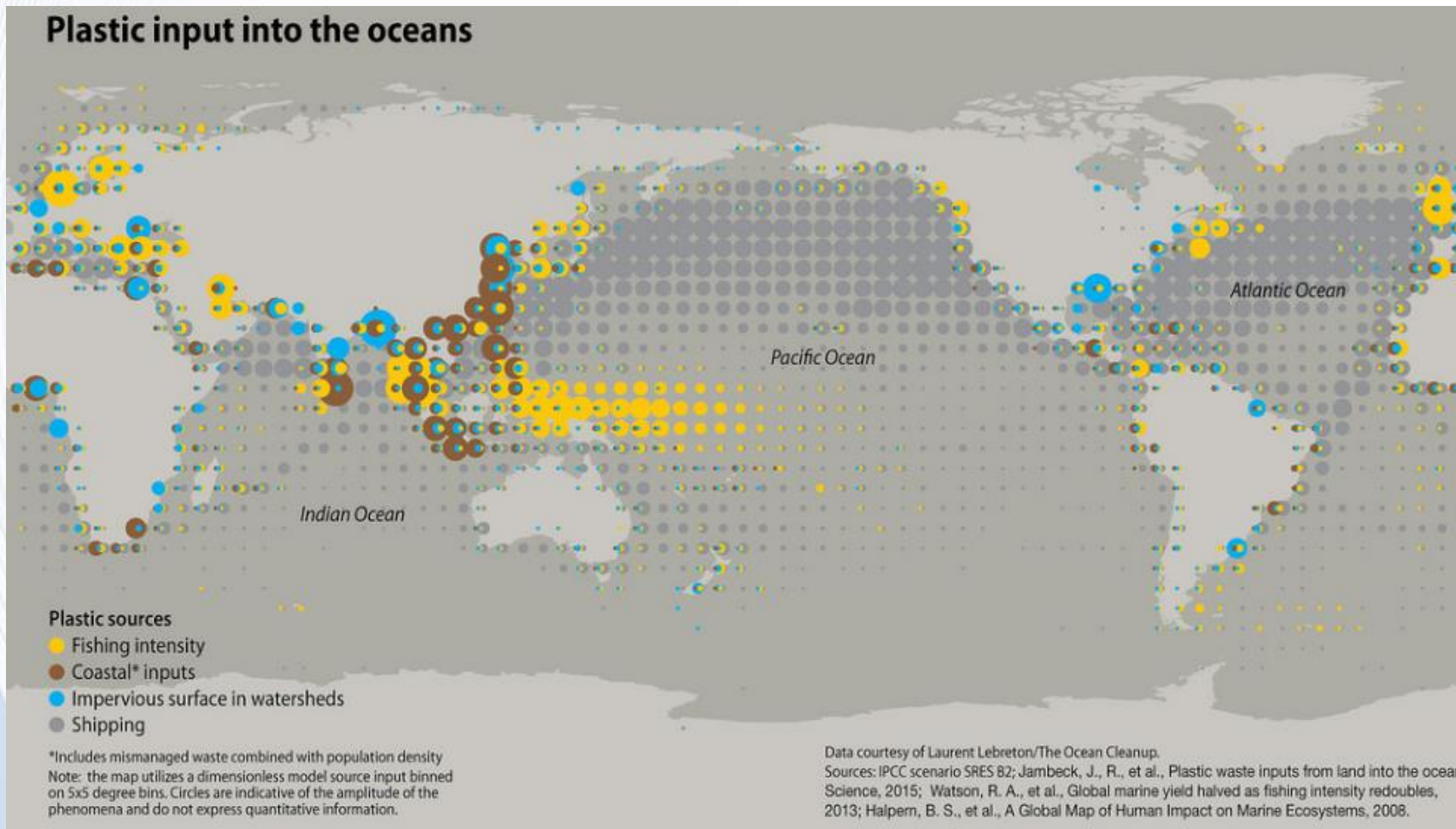
Marine Litter Vital Graphics



Des sources diverses

Des sources maritimes?

Marine Litter Vital Graphics

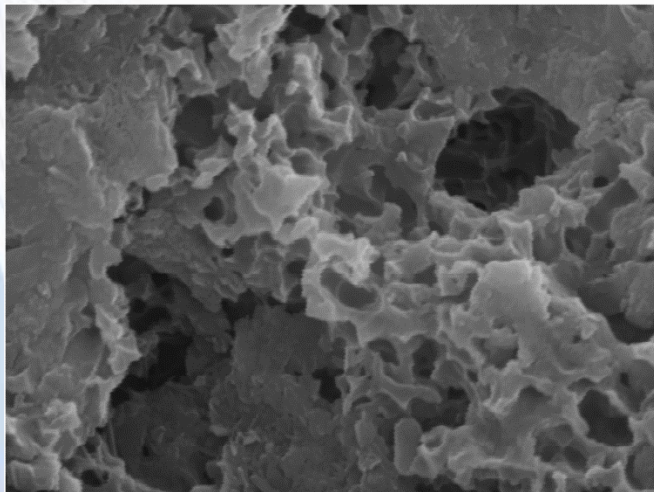
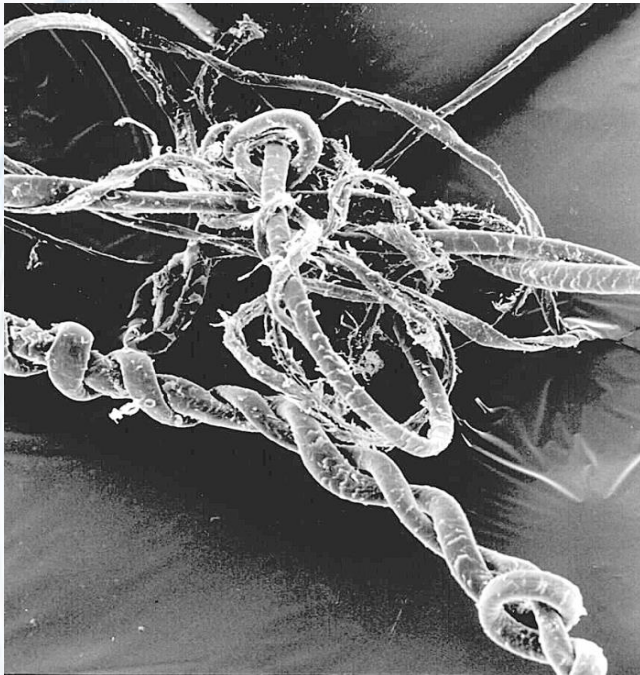


Sur les plages, flottants et sur les fonds

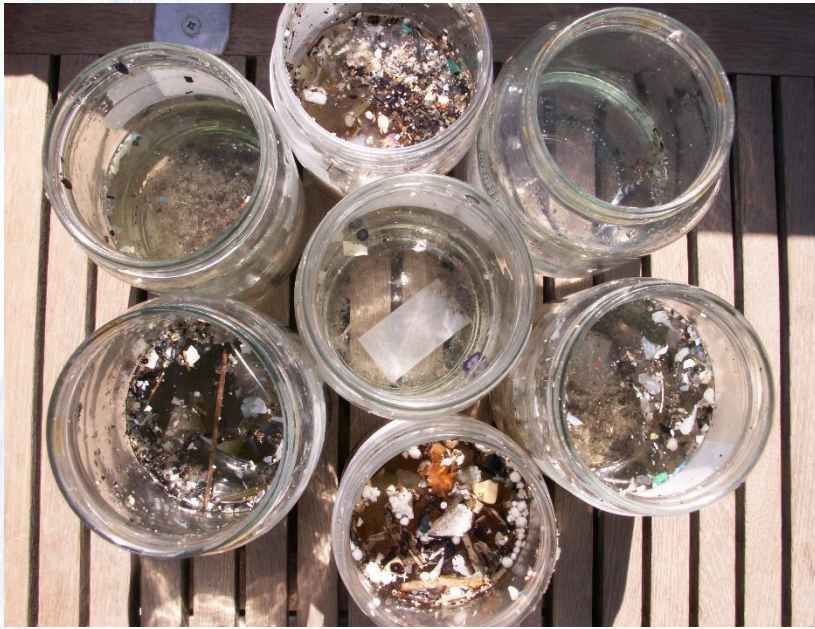


Quel bilan?





Une dégradation lente



Des microplastiques

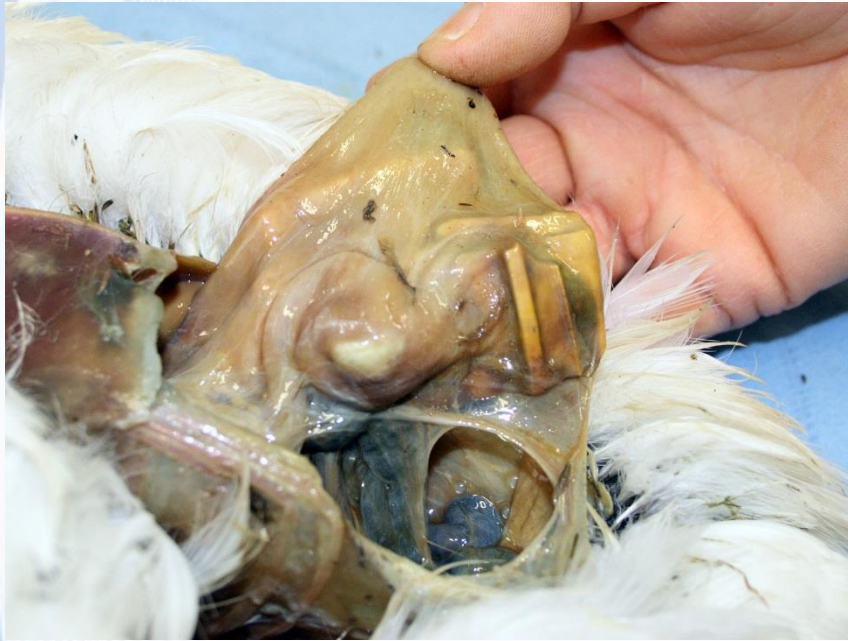


IMPACTS? Enchevetrements



J Stock





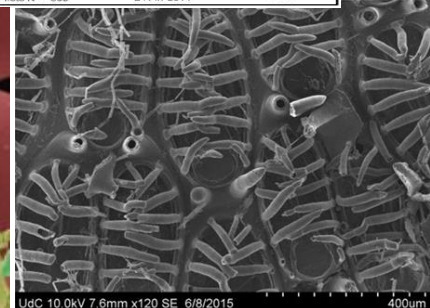
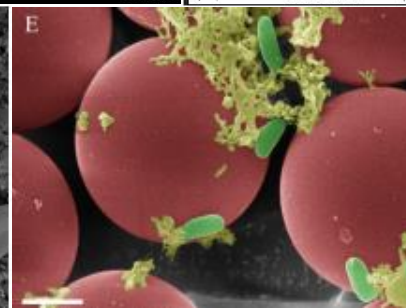
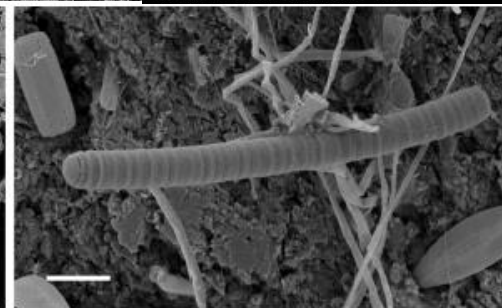
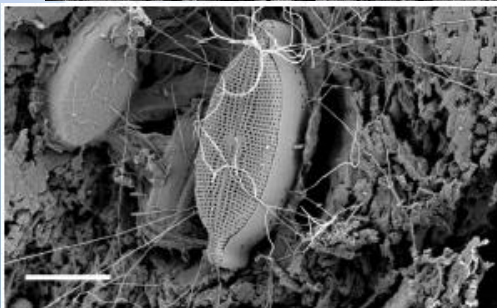
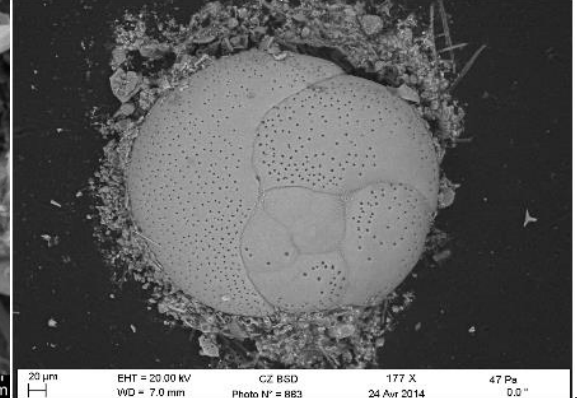
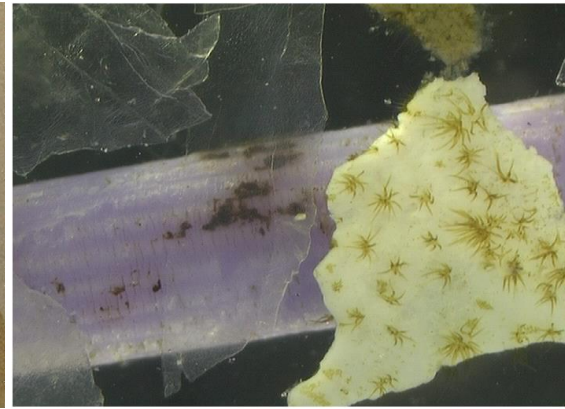
Quantités moyennes de déchets dans les estomacs de fulmars en mer du Nord

J Van Franeker, IMARES



IMPACTS? Ingestion

Transport d'espèces, vecteurs de pathogènes



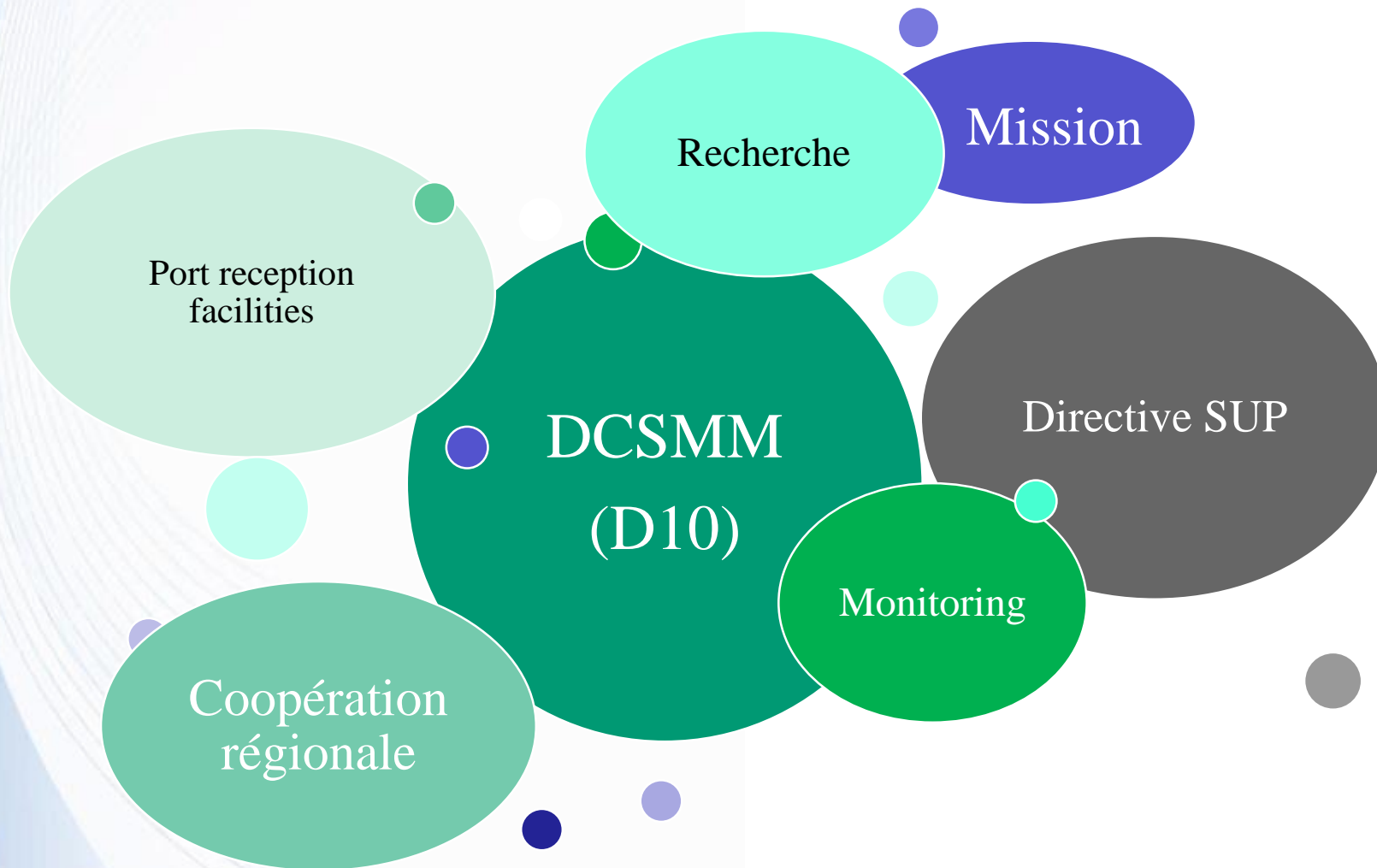
Zettler et al., *Environ. Sci. Technol.*, 2013, 47 (13), pp 7137–7146

Des risques pour la santé



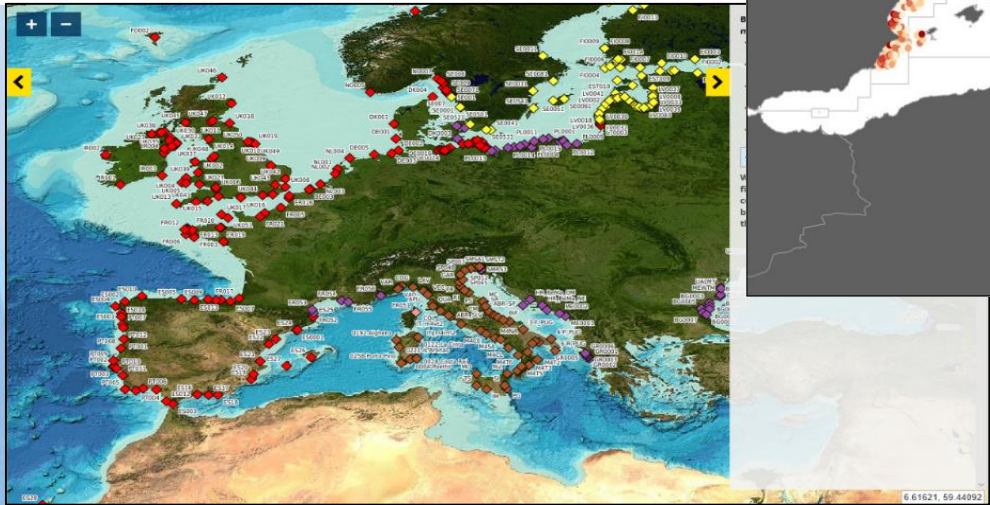
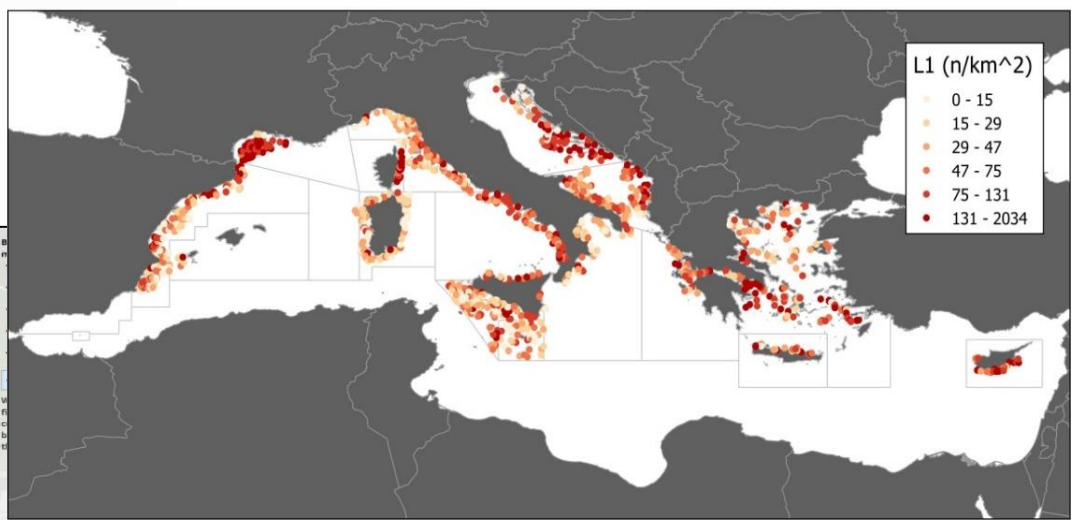
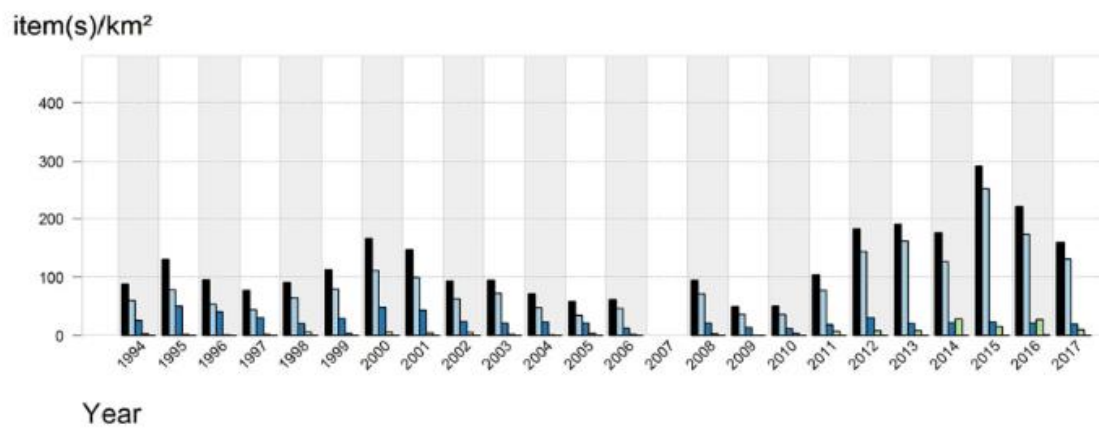
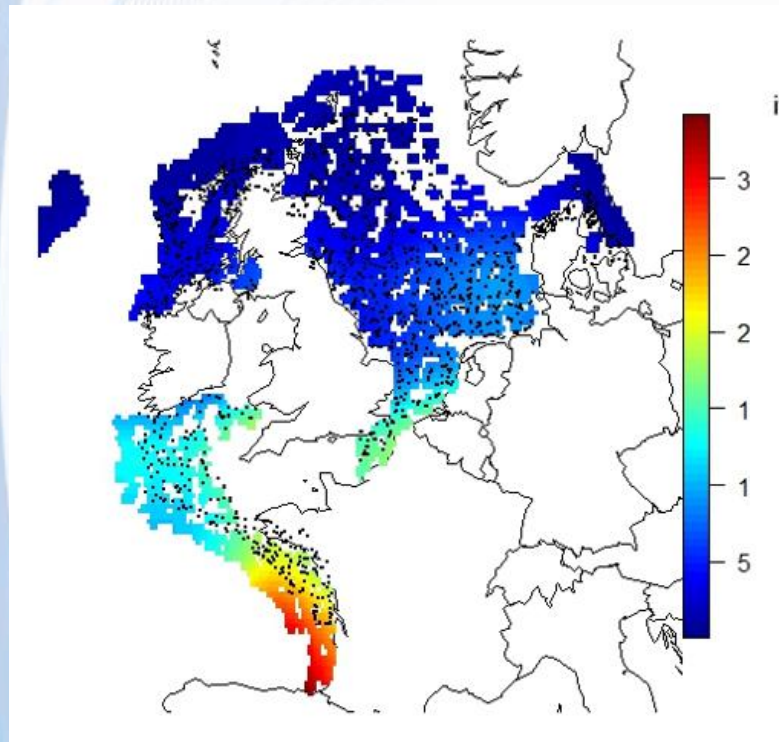


Des impacts sociaux et économiques

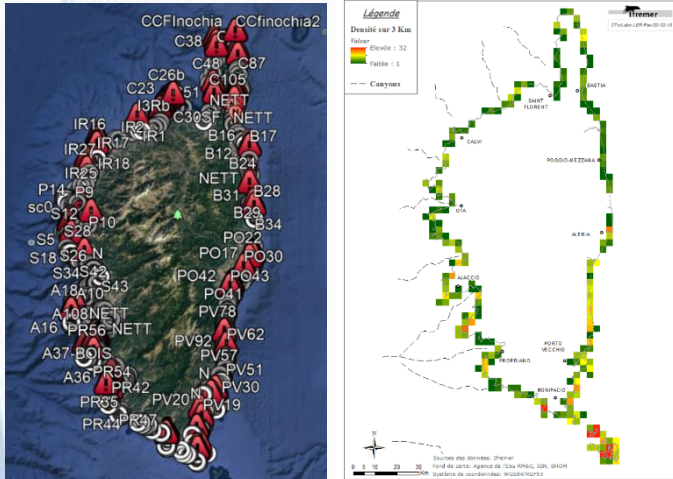


After Sponar, IMDC, 2018

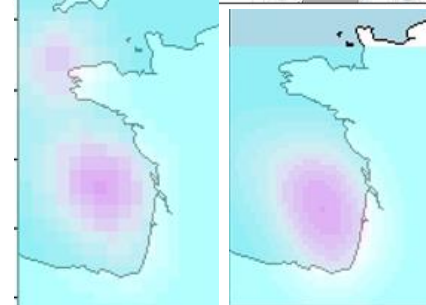
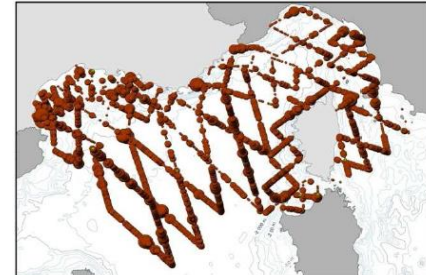
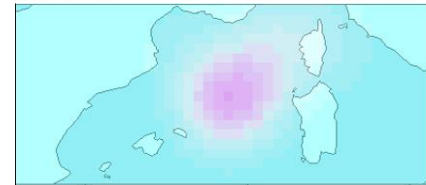
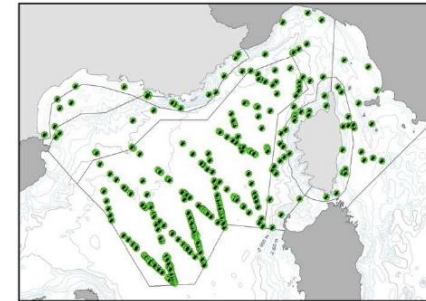
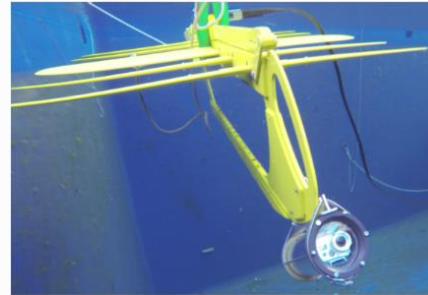
Surveillance



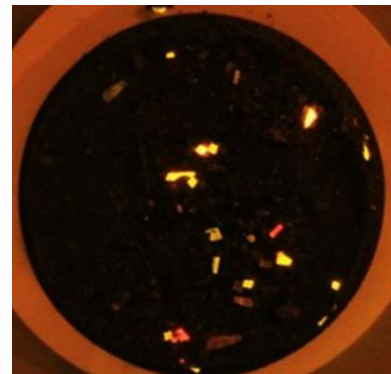
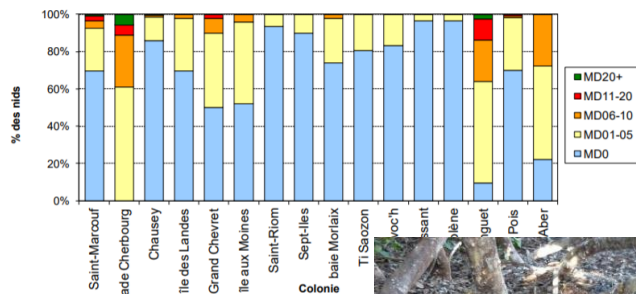
Moindre couts



Automatisation



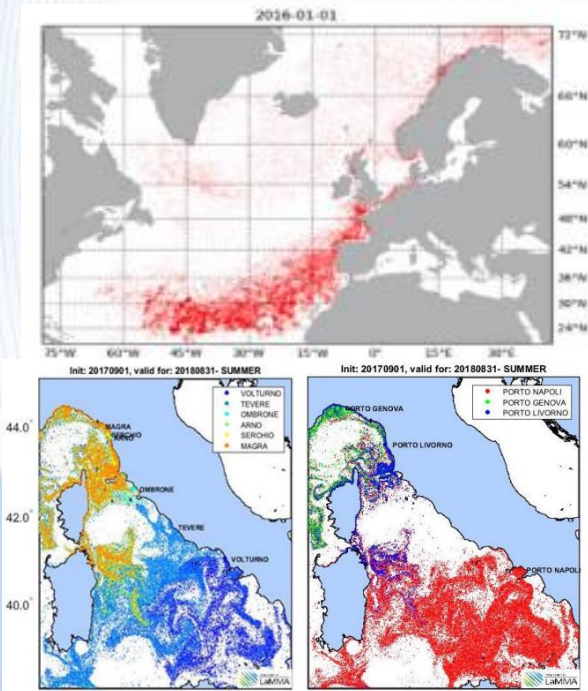
comprendre



Petites particules

Quels risques

Modèles



Drones



Emmelement



Gérer les données

Conservation status or decomposition level	Discovery circumstances	Health status	By-Catch cause	Main injuries	Affected body part	Entanglement type	Litter causing entanglement	Fat reserves
Alive	Stranding	Poor condition	Straight thread	Fracture	RRF	Active	Pieces of net	Thin
Fresh	By-catch/Fisheries	Fair condition	Trawl	Amputation	LFF	Passive	Monofilament line (nylon)	Fat
Partial	Found at sea	Good condition	Drift net	Sectioning	RRF	Undetermined	Rope or pile of ropes	Normal
Advanced	Dead at the discoveries centre		Fishing rod	Abrasion	LRF		Plastic bag	
Mummified			Non identified		Neck Carapace		Raffia	
					Plastron		Other plastics	
					Severed		Multiple materials	
							Unknow	

Des solutions difficiles à mettre en oeuvre





H. Glader/birdimagency.com

MERCI

